

Music Book Viewer Help (ver. 3.0)

© Copyright 2008-2020 Jørgen Sørensen - www.jososoftware.dk

Contents

	Page
Introduction	2
The Main Window	2
Menus in the Main Window	3
Opening a pdf file to display	4
Recommendations for use	4
Opening a pdf file from the Sheets List	5
Opening a pdf file from a Play List	8
Opening a pdf file from the All Lists window..	11
Opening a pdf file from the File List	12
Navigation and modifying the view in the Main Window	13
Connecting and setting up a foot switch	14
Command List	15
Changing the User Interface size	15
Additional Help.....	15
Additional Information	15

Press the "+" key and then the "Enter" key to go to the next page.
- or just the "Enter" key.

Press the "-" key and then the "Enter" key to go to the previous page.

Background

This software program was originally designed to operate using the Numeric Key Pad only.

It still can be operated this way; but some other ways to operate the program has been added.



First all commands which could be handled at the Numeric Key Pad were added to be handled at the normal computer keyboard too.

Later some "Single key commands" were added. Some of these can be handled by the Numeric Key Pad while others (F1 to F10) can be handled by the normal keyboard only. These commands add no new features; they are just faster to use. "Single key commands" are very suitable for foot switch control, having a limited number of "keys". More about foot switch control at page 14.

Besides this, you can of course use your computer mouse.

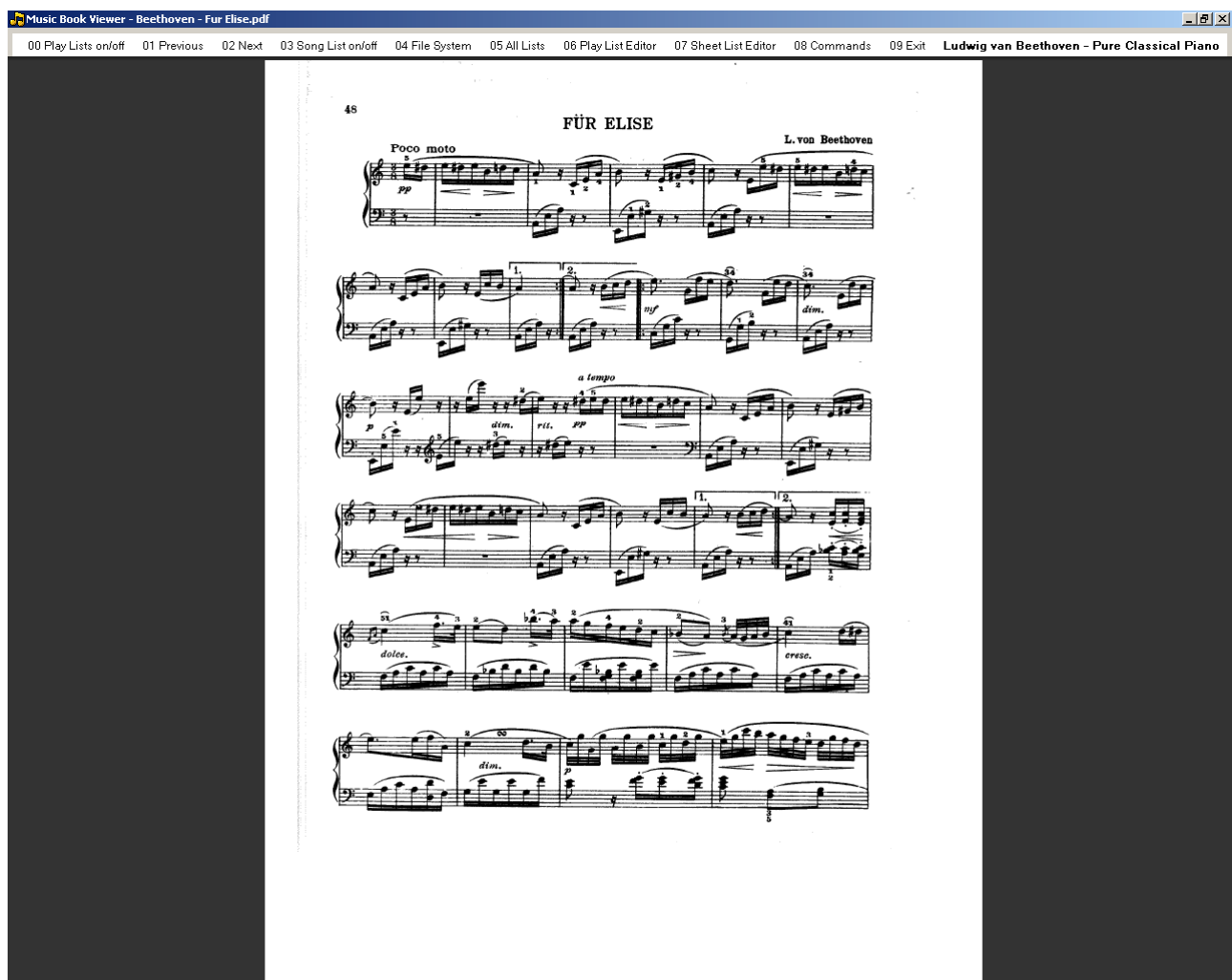
Introduction

Music Book Viewer is a **pdf file viewer** controlled by few keys only: Numbers 0 - 9; / (divide); * (multiply); + (add); - (subtract); Home; End; Pg Up; Pg Dn; and the 4 arrow keys.

This means that the program can be controlled from the Numeric Key Pad only. This approach will come very handy in many situations, e.g. the gigging musician.

Besides this the program can be controlled from an ordinary computer keyboard as well with or without using the mouse; and partly from a foot switch.

The Main Window



The sheets (pdf files) are displayed in the main window. In the top of this window you will find a menu bar.

Besides clicking at the menus, all similar commands can be performed by typing the menu number (00 - 09) and clicking the "Enter" key.

E.g. typing "09" (without quotes) and clicking "Enter" will close the program.

Menus in the Main window

00 Play List on/off	This will open/close a panel in the left side of the screen showing all Play Lists
01 Previous	This will display the previous sheet in the Play List
02 Next	This will display the next sheet in the Play List
03 Song List on/off	This will open/close a panel in the right side of the screen showing a list of all sheets in the selected Play List
04 File System	This will open a File List in a separate window
05 All Lists	This will open the All Lists window
06 Play List Editor	This will open the Play List Editor in a separate window
07 Sheet List Editor	This will open the Sheet List Editor in a separate window
08 Commands	This will open the Commands window
09 Exit	This will close the program

In the right side of the top menu the User Notes related to the displayed sheet is shown.

Single key commands

Pressing the F1 key is equal to typing 01 + pressing the Enter key;
pressing the F2 key is equal to typing 02 + pressing the Enter key;
etc.

...

pressing the F10 key is equal to typing 00 + pressing the Enter key.

Opening a pdf file to display

There are four methods for selecting a music sheet (pdf file) for display in the viewer main window:

1. Opening a music sheet from the **Sheet List**

An infinite number of music sheets (pdf files) can be added to the Sheet List. And even individual sheets in fake book collections can be added. Displaying a sheet from Sheet List only requires a few keystrokes.

2. Opening a music sheet from a **Play List**

In the program the user can create up to 99 Play Lists, each holding an infinite number of music sheets. When opening a Play List the first sheet in this list will be displayed. Going forwards – or backwards – in the list only requires a few keystrokes.

3. Opening a music sheet from the **All Lists window**

The All Lists window gives the user access to all sheets from the Sheets List, and to all sheets in all Play Lists. Displaying a sheet from All Lists only requires a few keystrokes.

4. Opening a music sheet from the **File List**

Using this method to open a sheet (pdf file) is much like opening a file in a normal computer system. But unlike the "normal" method you can use the few keys mentioned above to find and load sheets from your disc drive(s).

These four methods can be used side by side in the program.

Recommendations for use

If you frequently use a sheet it is recommended to add this sheet (pdf file) to the Sheet List. This will give you a much faster access to the sheet than finding the file in the File System.

When you plan a performance or show it is recommended to create a Play List. This will give you an even faster access to the sheets.

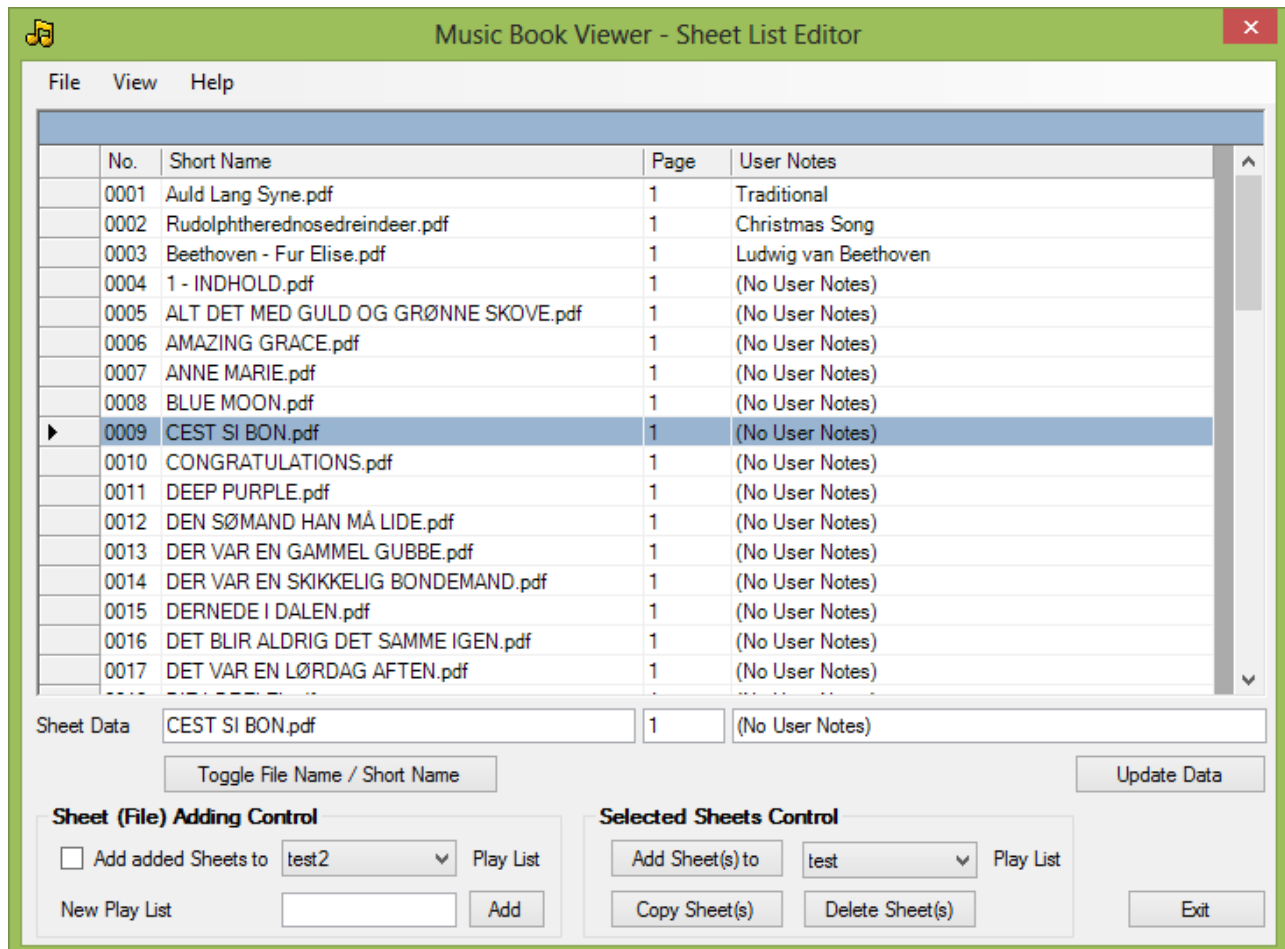
If you want to select a sheet from your total collection in the Sheet List, you can display all the collection in the All Lists window.

If you seldom use a sheet you can find it - and load it - from the File List (your disc drive(s)).

Opening a pdf file from the Sheet List

A list of sheets (pdf files) for the viewer is created and maintained by the Sheet List Editor.

The Sheet List Editor is opened from the Main Window by clicking the "07 Sheet List Editor" menu - or by typing "07" and pressing the "Enter" key.



The Sheet List Editor is used for adding and deleting sheets in an internal data file.

The data is furthermore stored in the "MBVsheets.pdf" file which is opened by the "/"+" command in the Music Book Viewer.

To add a Sheet / more Sheets

Menu File ► Add Sheet; and select a pdf file. The sheet is auto numbered and the file data is stored internally.

The File Open Dialog supports "Multiselect", meaning more files can be added at the same time. Hold down the "Ctrl"-key while clicking at the files to add.

To add a Sheets Folder

Menu File ► Add Sheets from Folder; and select a folder. All pdf files in the selected folder are added to the list. The sheets are auto numbered and the sheets data are stored internally.

Notice:

When adding sheets, a reference between the number in column 1 and the pdf file path and name is created. If you move the pdf file to another location this reference becomes invalid; and the program will not work correct.

Adding sheets to Play List while adding sheets

The added sheet(s) can be added to a Play List while adding sheets. New Play Lists can be added here too. Type an unique name and press button 'Add'. Sheets can be added at a later time, read 'Add sheet(s) to Play List' below.

To delete a Sheet

Select the sheet by clicking in the grey area to the left of the sheet number. Then click Menu File ► Delete Selected Sheet(s) - or press the equivalent button.

To delete more Sheets

Select a sheet by clicking in the grey area to the left of the sheet number. While pressing the "Ctrl" key select additional sheets to delete. Then click Menu File ► Delete Selected Sheet(s) - or press the equivalent button.

Notice:

The pdf files are NOT deleted from your disc drive - they are just removed from the sheet list.

Sheet Data

Besides the pdf file path and name, the list holds for every single sheet a "Short Name" value; a "Page" value; and a "User Notes" value.

By default the "Short Name" is the file name; the "Page" is 1 (one); and the "User Notes" is (empty).

These three values can be modified. Select a sheet by clicking in the grey area to the left of the sheet number; type information in the three text fields below the table; and click button "Update Data" to modify.

Typical use is:

- "Short Name" is the name of the music; e.g. "Yesterday" opposite to the file name, which can be any name; e.g. "beatles_02.pdf". The "Short Name" is used in Play Lists. (more about Play Lists in next section)
- "Page" is the page number where the music sheet actually begins. Default value is "1"; but in e.g. a Fake book it can be any number.
- "User Notes" can be any information about the song, e.g. instrumentation, genre, tempo, style.

More sheets in a Fake Book

More sheets in a Fake book are added in the easiest way by:

- add a sheet from the fake book
- select this sheet (click in the grey area to the left of the sheet number)
- copy this sheet (button or menu "Copy Selected Sheet(s)")
- change "Short Name"; "Page" and "User Notes" as appropriate

When adding sheets from a fake be careful with the "Page" value. You can not rely on the page numbers in the Table of Contents of the Fake Book, as this book might have some un-numbered pages.

Therefore check the correct page number by opening the fake book in Acrobat Reader, and get the page value from here.

Add sheet(s) to Play List

Select a Play List; select sheet(s) to add to this play list; and click the button "Add Selected Sheet(s) to" (more about Play Lists in next section)

Toggle File Name / Short Name

Click the button to toggle.

Column sorting

Click the column header to sort numerically / alphabetically.

Print Sheet List

The current view in the Sheet List Editor can be printed as a pdf file. Go to File menu -> Save current View as pdf-file

Saving changes

If any changes have been done, the user will be prompted to save these changes when closing the Sheet List Editor. Clicking "Yes" will update both the internal file data list and the sheet list file.

The internal data file

This file holds the following information:

- Sheet No.
- Sheet File Name (complete path and file name)
- Short Name
- Page
- User Notes

The Viewer relies on valid data in this file. Therefore it is not recommended to edit this file manually.

Furthermore do not move sheets in the list to other locations in the computer file system as the Music Book Viewer then will not be able to find them.

However, if you have to move files then delete the existing entries in the sheet list by using the Sheet List Editor; and add new entries pointing to the new location.

Commands (in the Main Window)

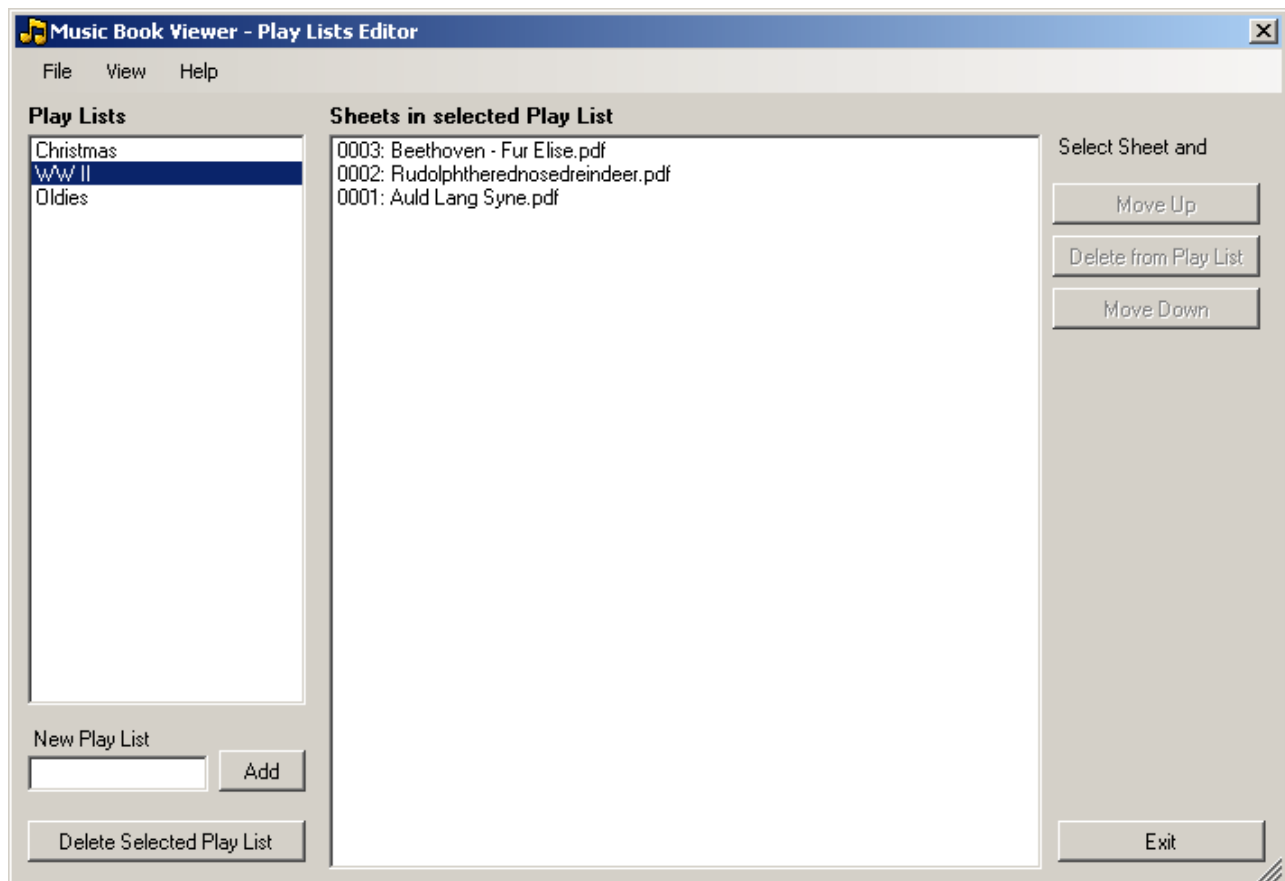
(x and y are numbers)		Sample Command
Selecting Sheets		
/x	Opens Sheet No. x at the defined page	(e.g. /0007)
/x/y	Opens Sheet No. x at Page y	(e.g. /0002/12)
Always press the Enter key to execute a command		

When selecting sheets any trailing zero's in the Sheet No. can be omitted, i.e. command "/34" is equal to "/0034"

Opening a pdf file from a Play List

The user can create up to 99 Play Lists each holding an infinite number of sheets. A list of created Play Lists is created and maintained by the Play List Editor.

The Play List Editor is opened from the Main Window by clicking the "06 Play List Editor" menu - or by typing "06" and pressing the "Enter" key.



There are no Play lists in the program by default.

To create a new Play List

- Type the name of the Play list in the text box below heading "New Play List"
- Click the "Add" button

The play list will now appear in the "Play Lists" list (left side of the window)

To add sheets to a Play List

- Close the Play List Editor
- Open the Sheet List Editor (command "07")
- Select the sheet(s) to add to a play list
- In the bottom of the window select the play list
- Click button "Add Selected Sheet(s) to"

To order the sequence in a Play List

- Select the Play List to order
- Select a sheet in the list in the right side of the window
- Use the "Move Up" and "Move Down" buttons to move the selected sheet

- Use the "Delete from Play List" Button to delete the selected sheet from the Play List

To delete a Play List

- Select the Play List to delete
- Click the "Delete Selected Play List" to delete this play list

Saving changes

If any changes have been done, the user will be prompted to save these changes when closing the Play List Editor. Clicking "Yes" will update both the internal file data list and the play list file.

The internal data file

This file holds the following information:

- Play List name
- Sheet No(s) as defined in the Sheet List.

Using the Play List

(go to next page)

Using the Play List

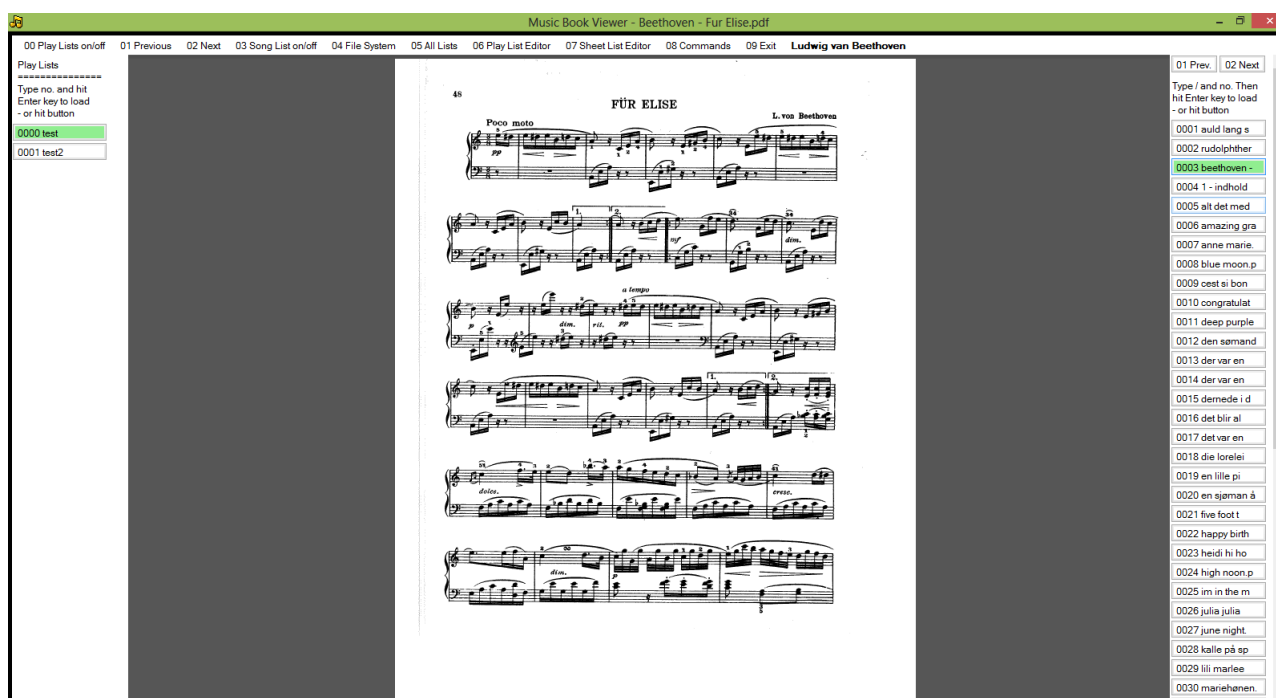
A list of Play Lists can be opened in the left side of the Main window by typing the "00" command.

Select a Play List by typing its number, e.g. "0000". The collection of sheets in the selected list can be opened in the right side of the Main window by typing the "03" command. By default, the first sheet in the selected Play List will be displayed.

Now use the "02" command to go to the next sheet - or "01" to go to the previous sheet.

Or type "/" followed by sheet number and hit the Enter key - or use the computer mouse to select any sheet.

Notice that both the selected Play List and the selected sheet are highlighted.



Commands (in the Main Window)

(x is a number)	Sample Command
Open a Play List	
00	Opens the list of Play Lists (in the left side panel of the window)
00xx	Opens Play List no. 00xx at the first sheet in the list (e.g. 0005)
01	Display previous sheet in selected Play List
02	Display next sheet in selected Play List
03	Opens the list of sheets in selected Play List (in the right side panel of the window)

Always press the Enter key to execute the above commands

Single key commands (in the Main Window)

Pressing the F1 key is equal to typing 01 + pressing the Enter key;
 pressing the F2 key is equal to typing 02 + pressing the Enter key;
 pressing the F3 key is equal to typing 03 + pressing the Enter key; and
 pressing the F10 key is equal to typing 00 + pressing the Enter key.

Opening a pdf file from the All Lists Window

The All Lists window is opened from the Main Window by clicking the "05 All Lists" menu - or by typing "05" and pressing the "Enter" key.

In this window you can change the view between:

0	1	2	3	4	5	6	7	8	9
(Ghost) Riders In The...	(They Long To Be) Cl...	(You Make Me Feel L...	007 Theme.pdf	A Groovy Kind Of Love	A Hard Days Night	A Lover's Concerto	A Taste Of Honey	A Whole New World (...)	Abraham, Martin & John
Against All Odds.pdf	Alfie	All By Myself	All I Ask Of You	All You Need Is Love	Alone Again (Naturally)	Always On My Mind.pdf	Always On My Mind	Always Something Th...	Amazing Grace
American Pie	And I Love You So	And So It Goes	Angel Of The Morning	Angels.pdf	Annie's Song	Another Day In Parad...	Any Dream Will Do	Apache	Are You Lonesome T...
Around The World In ...	Arthur's Theme.pdf	As Tears Go By	Auld Lang Syne	Axel F	Baby Elephant Walk	Baby I'm A Want You	Baby Love	Bad Case Of Loving ...	Band On The Run
Barbara Ann	Beach Baby	Believe	Ben	Bennie And The Jets	Blue Eyes	Blueberry Hill	Bobby's Girl	Bohemian Rhapsody	Born Free.pdf
Born Free	Born To Be Wild	Brand New Key	Breaking Up Is Hard...	Brideshead Revisited...	Brothers In Arms.pdf	Bus Stop	By The Time I get To ...	Bye Bye Love.pdf	Bye Bye Love
Cabaret	California Dreamin'	Call Me	Candle In The Wind...	Candle In The Wind	Can't Get You Out Of ...	Can't Help Falling In L...	Careless Whisper	Carp-Medley.pdf	Carrie-Anne
Catch A Falling Star	Chanson D'Amour	Chantilly Lace	Chariots Of Fire	Chim Chim Cher-ee	Circle of life.pdf	Clair	Climb Every Mountain	Close To You.pdf	Colonel Bogey March
Come Together	Conquest of paradise...	Consider Yourself	Copacabana	Cotton Fields	Could It Be Magic.pdf	Coward Of The County	Cracklin' Rosie	Cry Me A River	Dancing In The Street
Daniel	Daydream Believer	Daydream	Deer Hunter.pdf	Dellah	Desafinado	Diamonds Are Foreve...	Do you Know The W...	Dominique	Don't Be Cruel To A H...

All Sheets in the Sheets List (mode 1)

0	1	2	3	4	5	6	7	8	9
Songs A-C	Songs D-H	Songs I-L	Songs M-S	Songs T-Z	Classical	League 1	League 2	League 3	A List
B List									

All Play Lists (mode 2)

0	1	2	3	4	5	6	7	8	9
A Whole New World (...)	Against All Odds.pdf	The Air that I Breathe	Alone Again (Naturally)	Always On My Mind.pdf	American Pie	Angel Of The Morning	Angels.pdf	And I Love You So	Another Day In Parad...
Any Dream Will Do	Around The World In ...	Arthur's Theme.pdf	Axel F	Born Free.pdf	Brideshead Revisited...	Brothers In Arms.pdf	Bye Bye Love.pdf	Candle In The Wind...	Can't Get You Out Of ...
Carp-Medley.pdf	Circle of life.pdf	Close To You.pdf	Conquest of paradise...	Could It Be Magic.pdf	Baby Love	Baby I'm A Want You	Bad Case Of Loving ...	The Banana Boat Song	Band On The Run
Barbara Ann	Ben	Bennie And The Jets	Blue Eyes	By The Time I get To ...	Cabaret	California Dreamin'	Call Me	Candle In The Wind	Careless Whisper
Carrie-Anne	Catch A Falling Star	Chariots Of Fire	Chim Chim Cher-ee	(null)	Clair	(They Long To Be) Cl...	Copacabana	Cracklin' Rosie	Coward Of The County
Abraham, Martin & John	Alfie	All By Myself	All I Ask Of You	All You Need Is Love	Always Something Th...	Amazing Grace	And So It Goes	Annie's Song	
Apache	Are You Lonesome T...	(null)	As Tears Go By	Auld Lang Syne	Baby Elephant Walk	Beach Baby	(null)	Blueberry Hill	Born To Be Wild
The Boys Are Back I...	Breaking Up Is Hard...	Bye Bye Love	Can't Help Falling In L...	Chantilly Lace	Chanson D'Amour	Climb Every Mountain	Colonel Bogey March	Come Together	Consider Yourself
Cotton Fields	Cry Me A River								

Sheets in selected Play List (mode 3)

Commands (in the All Lists Window)

*	Opens a list of all sheets in the Sheet List (selects mode 1)
/	Opens a list of all Play Lists (selects mode 2)
+	Opens a list of sheets in the selected Play List (selects mode 3)
Enter	Scroll Page Down
-	Scroll Page Up
,	(decimal) Close this window without selecting

(x and y are numbers)

xy	x is the row number in the table y is the column number in the table
	If mode 1: Opens Sheet no. xy
	If mode 2: Opens Play List no. xy
	If mode 3: Opens Sheet no. xy

Always press the Enter key to execute the xy commands. The other commands above are "Single Key Commands".

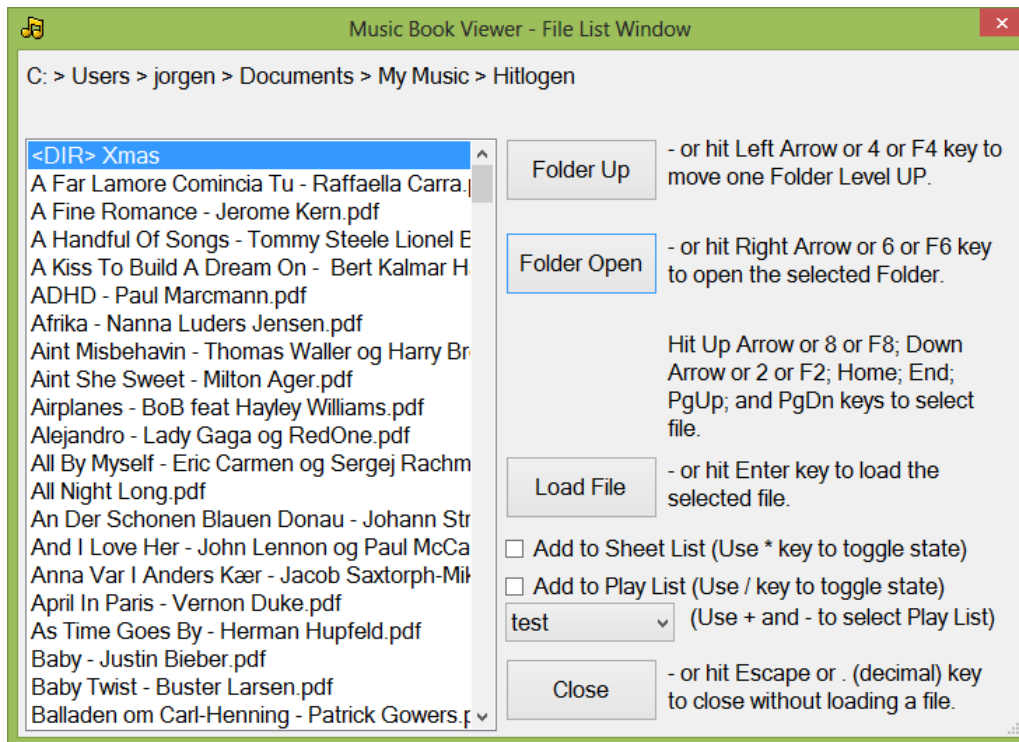
Or use the computer mouse.

Notice:

Adding, editing or deleting of sheets or play lists can't be done in this window.

Opening a pdf file from the File List

The File List is opened from the Main Window by clicking the "04 File System" menu - or by typing "04" and pressing the "Enter" key.



Notice:

- the actual folder is shown in the top of the window.
- the program will remember the last **opened** folder; and will start in this folder the next time the File List is opened.

Use your keyboard and mouse - or the commands below to select a file. And optionally to add the sheet to the Sheet List or any Play List.

Commands

←	or 4 or F4	Moves selected folder one level up
→	or 6 or F6	Opens the selected folder
↑	or 8 or F8	Moves selection one item in the list upwards
↓	or 2 or F2	Moves selection one item in the list downwards
PgUp		Moves selection in the list a page upwards
PgDn		Moves selection in the list a page downwards
Home		Moves selection to the first item in the list
End		Moves selection to the last item in the list
*		To toggle the "Add to Sheet List" state
/		To toggle the "Add to Play List" state
+ and -		To select Play List for adding
Enter		Loads the selected file (and closes the File List)

To close the window - **without loading a file** - click the "Escape" key or the "." (decimal) key.

Navigation and Modifying the view in the Main Window

After opening a pdf file there are a number of commands to change the view. The Command List Window is opened from the Main Window by clicking the "08 Commands" menu - or by typing "08" and pressing the "Enter" key.

Commands		Sample Command
(x, y and z are numbers)		
Open a Play List		
00xx	Opens Play List no. 00xx at sheet no. 1 in the list	(e.g. 0005)
01	Previous sheet in selected Play List	
02	Next sheet in selected Play List	
Selecting Sheets *)		
/x	Opens Sheet No. x at the defined page	(e.g. /0007)
/x/y	Opens Sheet No. x at Page y	(e.g. /0002/12)
Selecting Pages		
y	Go to Page y in current Sheet	(e.g. 34)
Moving forwards and backwards		
--	Go to previous Page **)	
-	Go Up **)	
+	Go Down **)	
++	Go to next Page **)	
-z	Scroll Up z pixels **)	(e.g. -200)
+z	Scroll Down z pixels **)	(e.g. +300)
Page size settings		
*+	Fit to Page Horizontally	
*-	Fit to Page	
*y	Zoom Page to y %	(e.g. *70)
2+	Opens two pages side by side view	
2-	Changes two page view to one page view	
Special commands		
/*	Opens the Play List File	
/+	Opens the Sheets List file	
/-	Opens the Help File (this file)	
//	Opens the Welcome File	
Always press the Enter key to execute a command		

*) When selecting sheets any trailing zero's in the Sheet No. can be omitted, i.e. command "/34" is equal to "/0034"

**) When the view is in "two pages side by side" mode:

-	Go back, e.g. from "page 5 + 6" to "page 3 + 4"
+	Go forward, e.g. from "page 3 + 4" to "page 5 + 6"

Single key commands	
Next Page	Press the Enter key
Previous Page	Press the Back key or press the decimal key in the Numeric Keypad

Connecting and setting up a foot switch

A foot switch to control some features in the "Music Book Viewer" software can be connected to the computer.

This instruction apply to setting up this foot switch ►

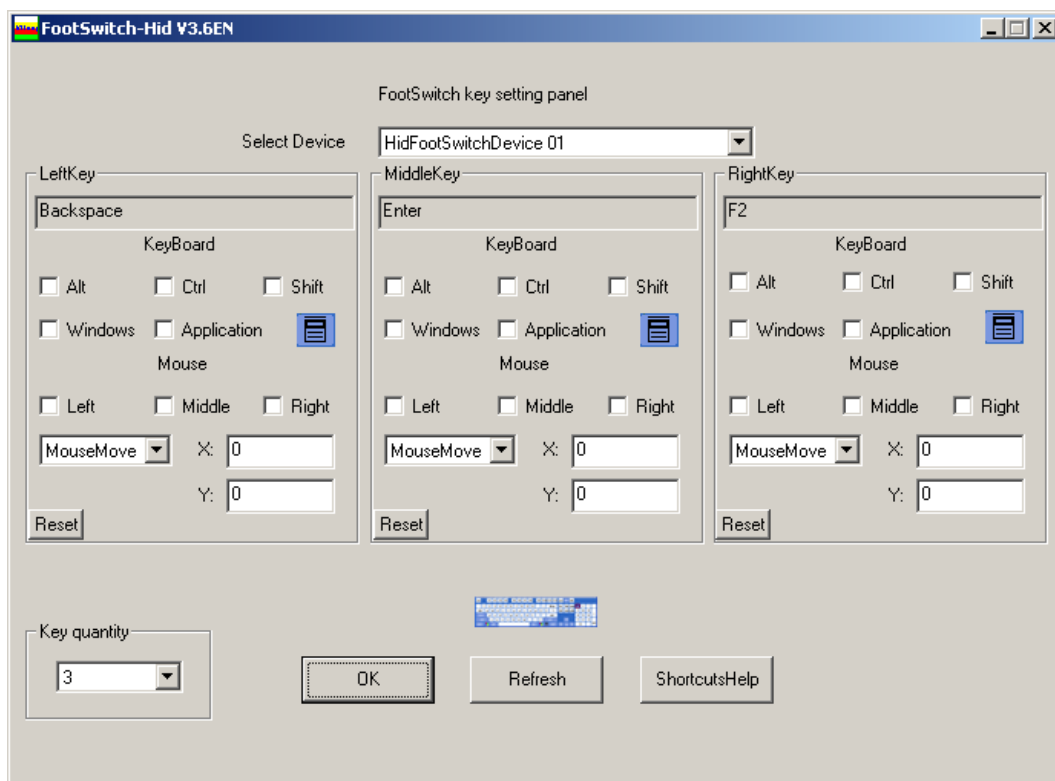
A list of suppliers of this foot switch is found at the software web page.



Instructions

- Connect the Foot Switch to a computer USB port.
- Run the Setup file from the enclosed CD. There is one file only at the CD.
- For each of the 3 foot switches, setup the key press event to handle. I.e. place the cursor in "LeftKey" box and press the key at your keyboard you want the left foot switch pedal to simulate.
- Click the OK button.

The computer will store these settings, meaning that the foot switch can be disconnected and reconnected without losing the settings.



This Foot switch is set to:

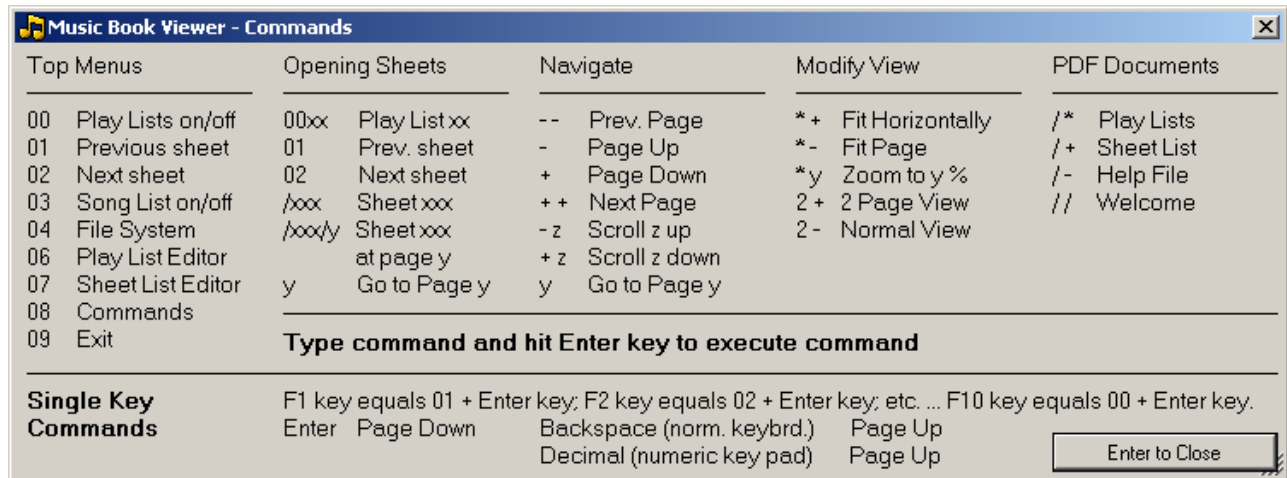
- Left Switch = Backspace Key. This is the single key "Page Up" command in Music Book Viewer software.
- Middle Switch = Enter Key. This is the single key "Page Down" command in Music Book Viewer software; and clicking the "Ok button" in all dialog boxes.
- Right Switch = F2 Key. This is the "Next Sheet in the current Play List" command in Music Book Viewer software.

Notice:

More Foot Switches can be connected to the computer.

Command List

The complete Command List can be called from the Main Window by typing "08" (without quotes) and clicking "Enter" – or by clicking the F8 key.



Changing the User Interface size

In the Sheet List Editor and Play Lists Editor you can change the User Interface size in Menu View.

Your setting is saved for future use.

Additional Help

In the Sheet List Editor and Play Lists Editor you will find additional help in Menu Help.

You will find the Online Help and the built-in Help.

Additional Information

In the Sheet List Editor and Play Lists Editor you will find additional information ("Check for new Version"; "Registration", and "About") in Menu Help.